

## Product Setup Instructions

Original Twist •

Easi Link Kit •

Flexi Link Kit •

Media Twist •

32" Media Twist •

Flat End Cap •

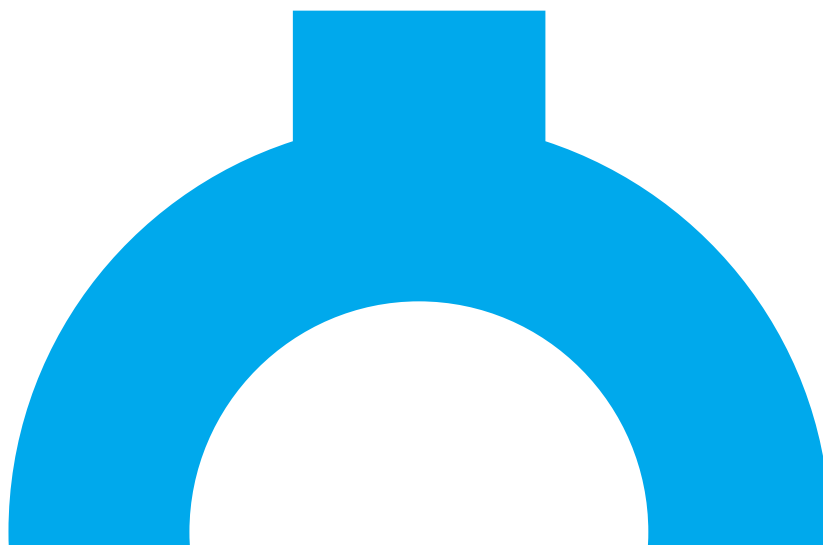
### **Curved End Cap •**

Twist Counter •

Double Hardcase Conversion •

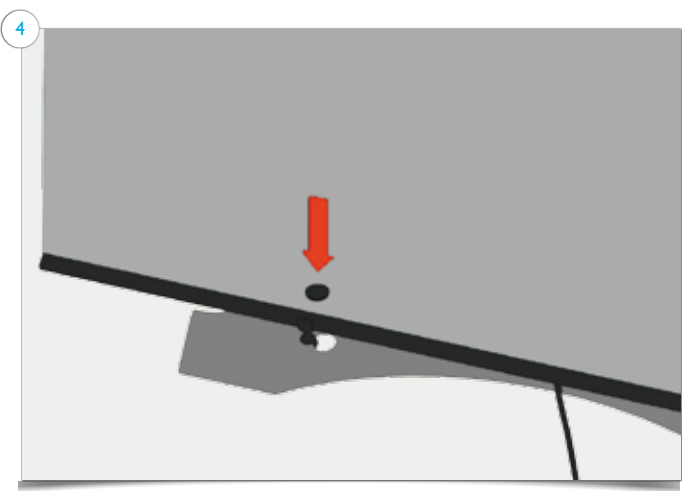
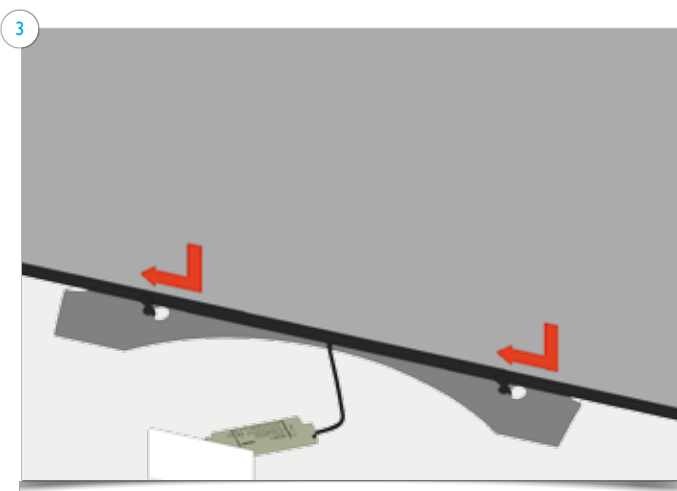
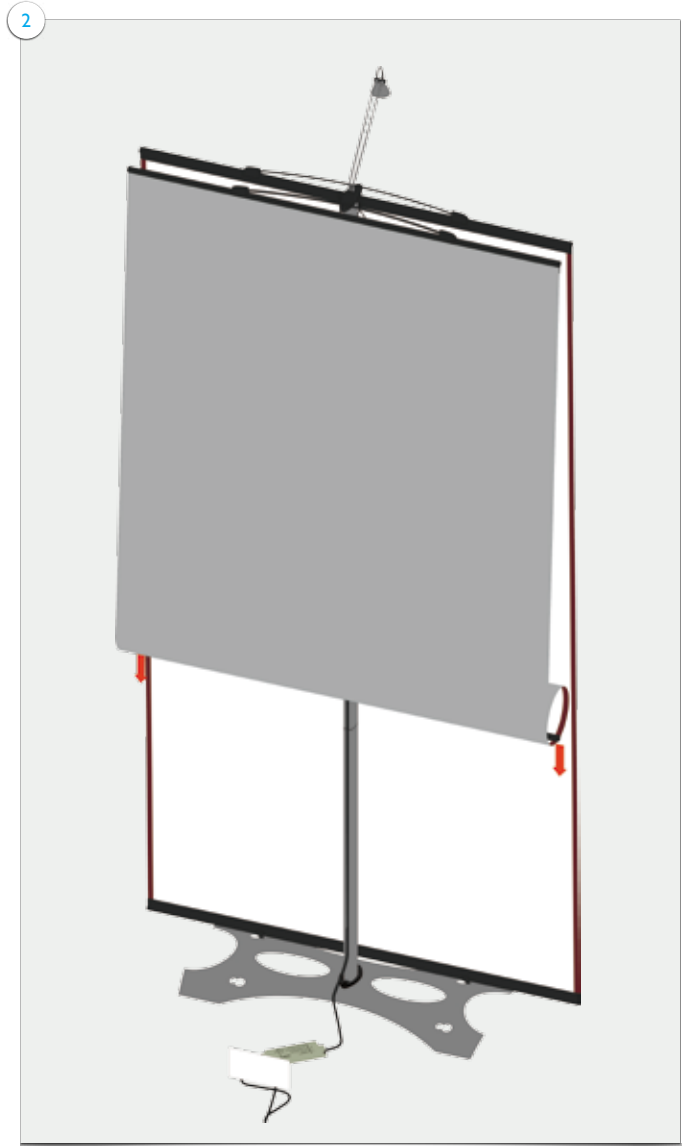
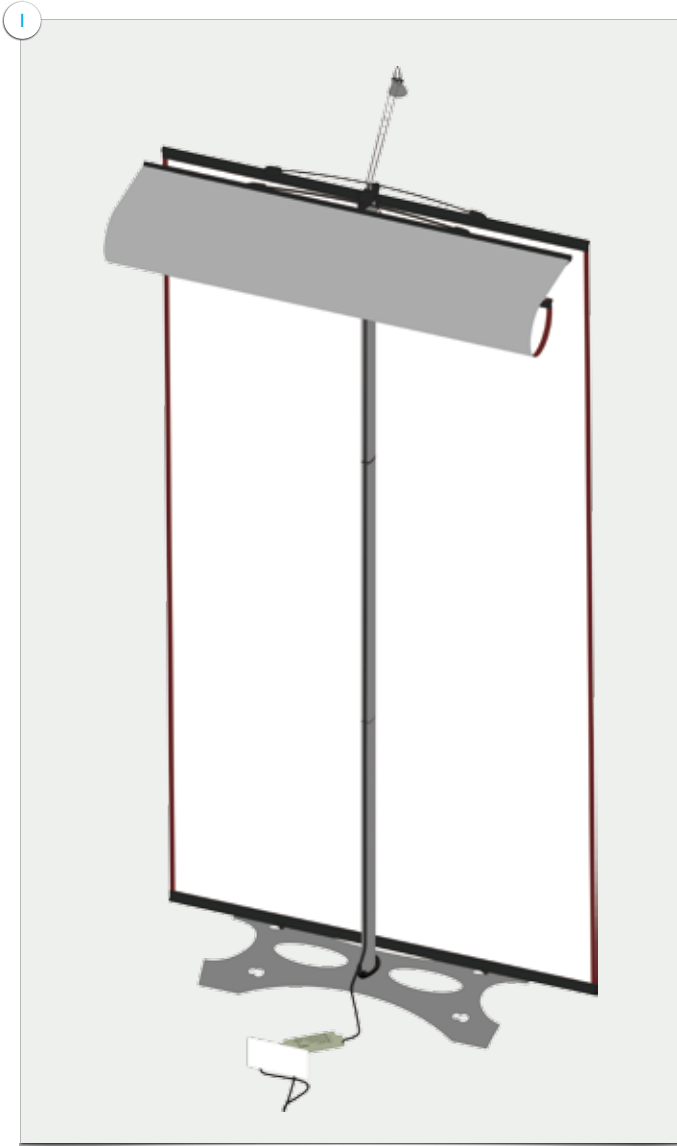
Single Hardcase Conversion •

Twist Shelf •



## Items

Items: 6x magnetic bars, endcap graphic panel, complete double sided **Twist** stand.



Part2  
Curved End Cap Setup Instructions

Attach magnetic bars to **Twist** graphics first, leaving half of magnetic bar showing.

